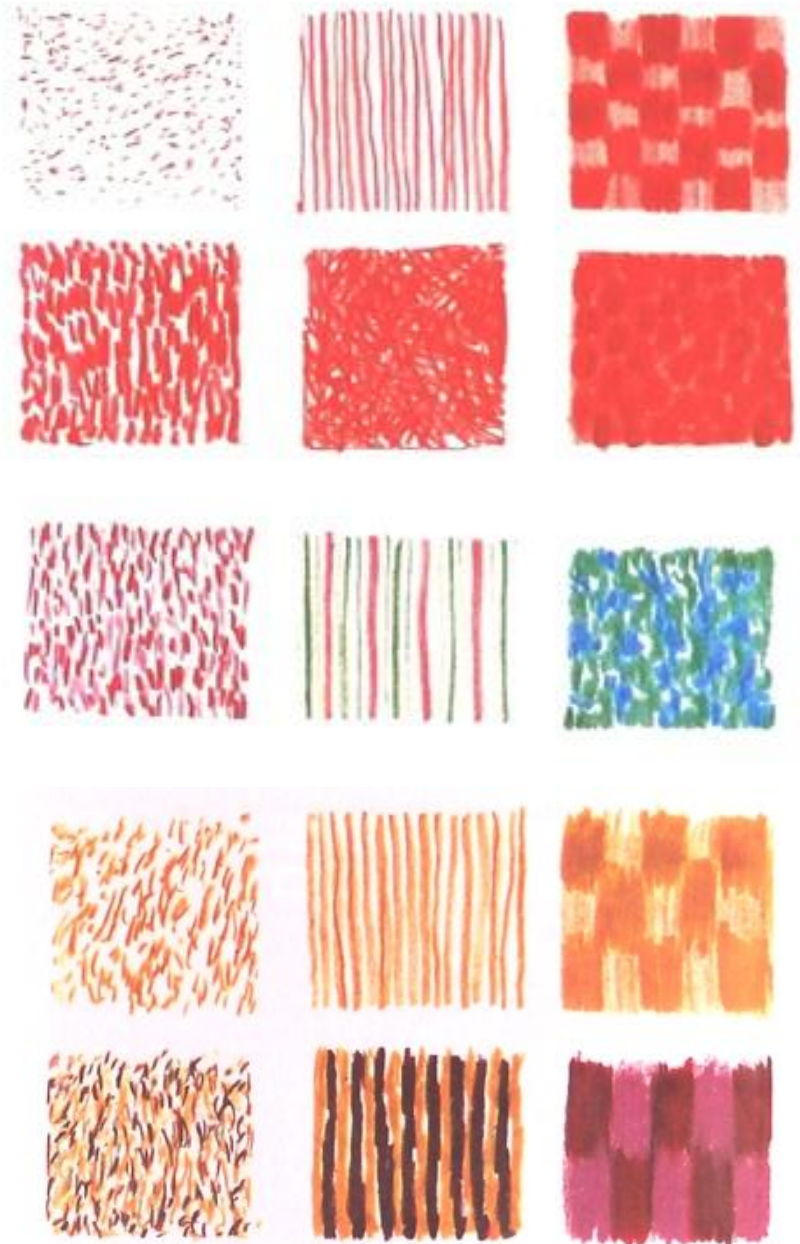




Drawing Studies 002

Drawing with a variety of media can
give experiences and images of
unique quality

Hatching



The first style of hatching

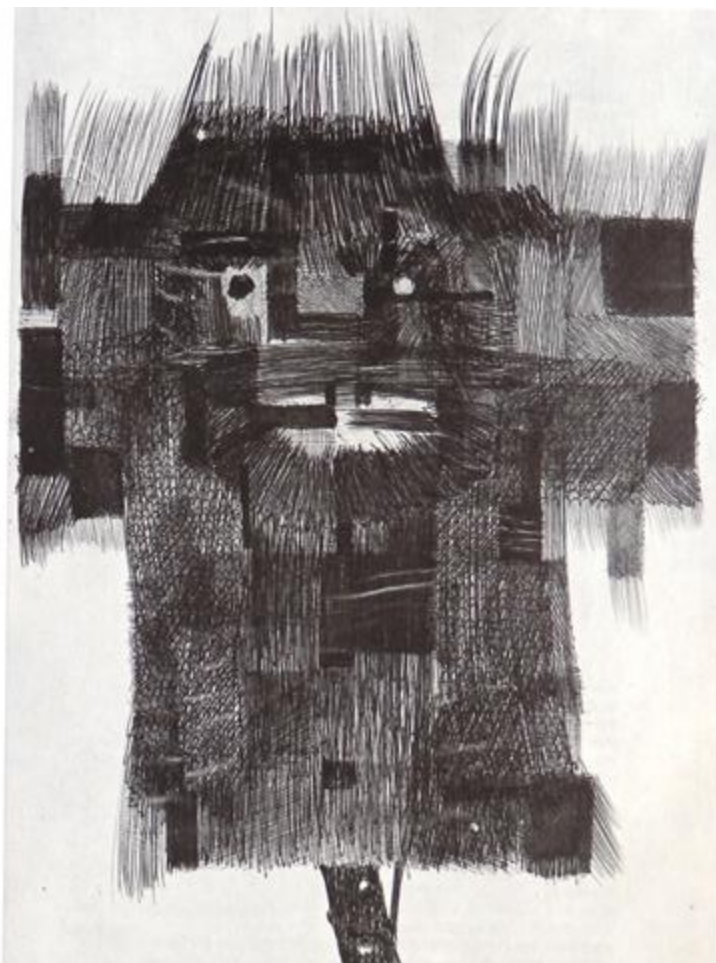
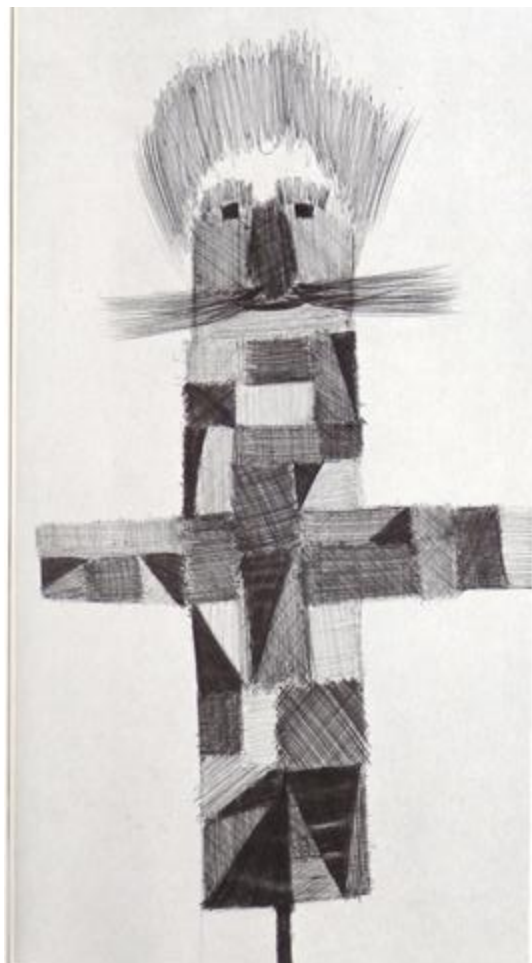
Try hatching in coloured pencil

- 1 Dotted , randomly spaced.
- 2 Dashed evenly spaced.
- 3 Linear faint, evenly spaced .
- 4 Medium or bold and multi-directional.
- 5 Patched and multi coloured, see how some combinations visually merge.
- 6 You may care to repeat some exercise with wax crayon.

Hatched Scarecrow

The point is to allow the subject to grow. The figure should be neither planned nor outlined.

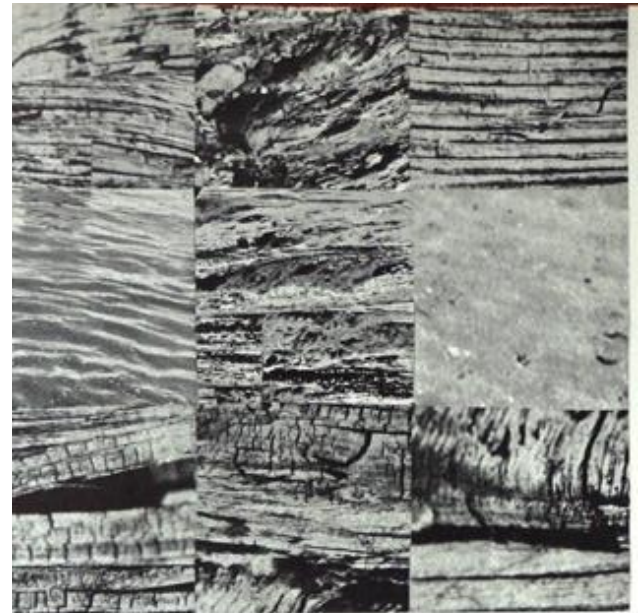
- 1 Imagine the skeletal form if you must.
- 2 Hatched areas can vary in size tone and value.
- 3 Contrasting dense and open areas will suggest features you may include; tattered garment, hat, collar, scarf, glove, boot.



Rubbings from Natural Structures

Newsprint you will need, an old newspaper is fine.

- 1 Select your textured surface; paving, rock, brick, timber, sacking or matting, fabric, tree bark.
- 2 Press your paper well on to the surface so depressions are clear.
- 3 Rub your media; wax crayon, chalk, charcoal. Care needs to be taken not to tear the paper, if so try applying the crayon to a rag and dab softly with it.
- 4 Alternate method is to use a roller impregnated with ink or paint.
- 5 Trim your rubbings into same sized rectangles and stick them to a backing sheet of news paper.
- 6 Artists work you may look at are; Ernst and Dubbuffet.



Fish - bird

- 1 Make a few sketches of a bird-fish or a fish-bird you imagine. In some the fish dominates in others the bird.
- 2 Enlarge the most successful outline on to a black paper. Consider the shape and its placement on the picture plane.
- 3 Divide the overall shape into parts of the creator. These we develop with surface decorations, small fish scales in some places and feathers of varying sizes in other placement. The bird-fish may be incongruous we are aiming for a unified image.
- 4 A white-out pen may be of advantage for marking details.
- 5 Keep in mind the effect for the negative areas, those left blank.
- 6 A heavy continuous line will make your form unduly firm and block like. Loose curves and indentations will suggest feathers and fins flowing.

